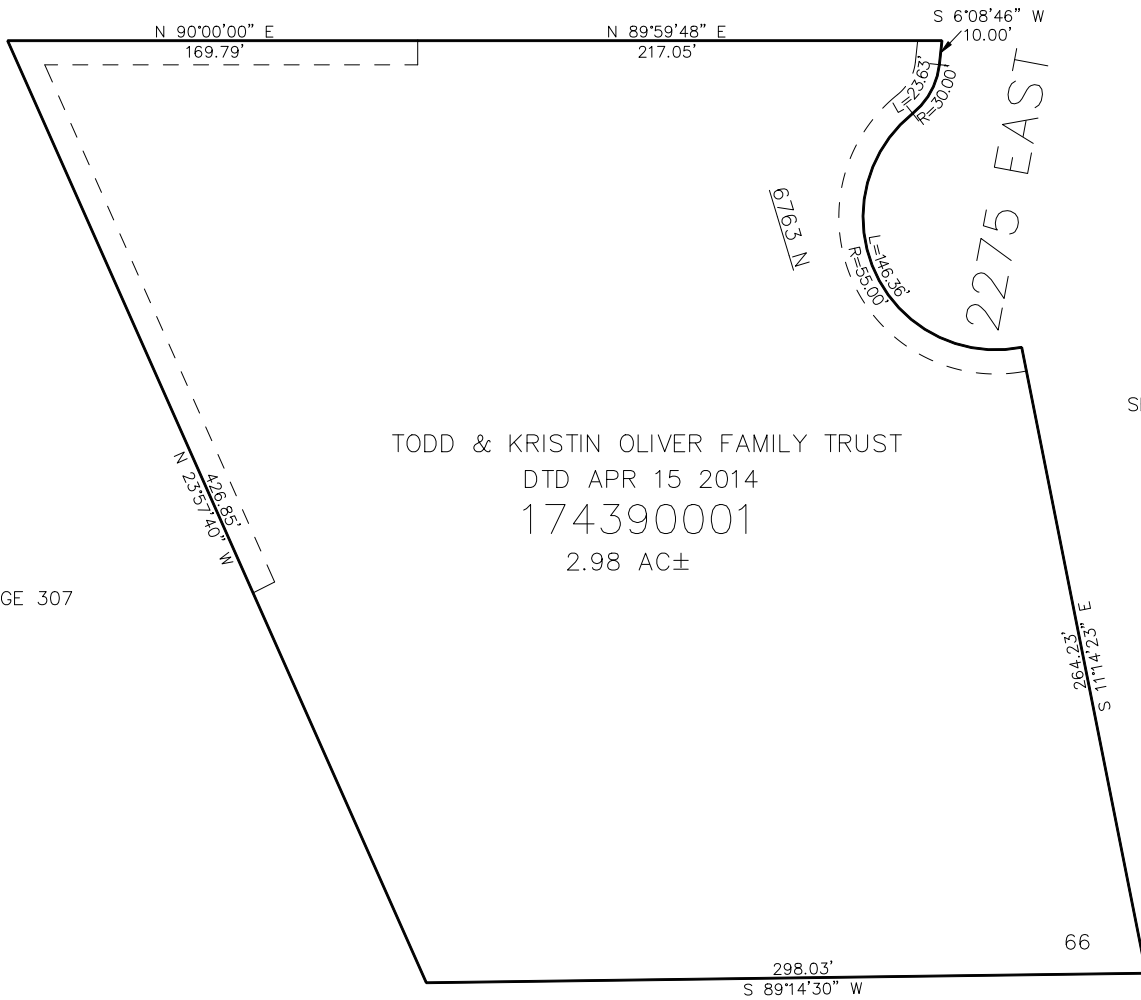


PART OF THE SE.1/4, OF SECTION 36, T.8N., R.1W., S.L.B. & M.  
**DURFEE CREEK ESTATES NO. 2C 2ND AMENDMENT**

IN WEBER COUNTY  
 SCALE 1" = 40'

TAXING UNIT: 411

SEE PAGE 307



TODD & KRISTIN OLIVER FAMILY TRUST  
 DTD APR 15 2014  
 174390001  
 2.98 AC±

SEE PAGE 307

SEE PAGE 307

10' UTILITY & DRAINAGE EASEMENTS EACH  
 SIDE OF PROPERTY LINES AS INDICATED  
 BY DASHED LINES EXCEPT AS OTHERWISE  
 SHOWN.

SEE PAGE 307

FOR COMPLETE ENG DATA SEE  
 ORIGINAL DEDICATION PLAT IN  
 BOOK 91, PAGE 82 OF RECORDS.